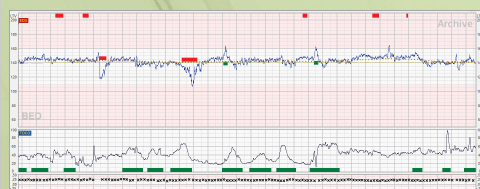


CTG classification

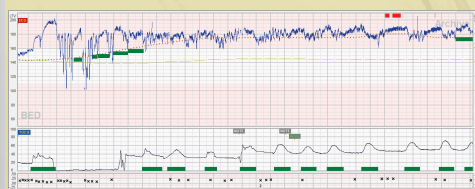
FIGO guidelines

2015 revised FIGO guidelines on intrapartum fetal monitoring

	Normal	Suspicious	Pathological
Baseline	110-160 bpm		<100 bpm
Variability	5-25 bpm	Lacking at least one characteristic of normality, but with no pathological features	Reduced variability. Increased variability. Sinusoidal pattern.
Decelerations	No repetitive* decelerations		Repetitive* late or prolonged decelerations for > 30 min (or > 20 min if reduced variability). Deceleration > 5 min
Interpretation	No hypoxia/acidosis	Low probability of hypoxia/acidosis	High probability of hypoxia/acidosis
Clinical management	No intervention necessary to improve fetal oxygenation state	Action to correct reversible causes if identified, close monitoring or adjunctive methods	Immediate action to correct reversible causes, adjunctive methods, or if this is not possible expedite delivery. In acute situations immediate delivery should be accomplished



Without Alert



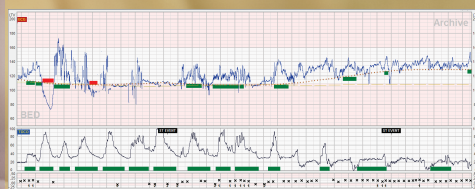
Tachycardia



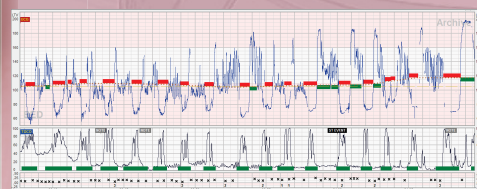
Reduced variability (STV), No accelerations



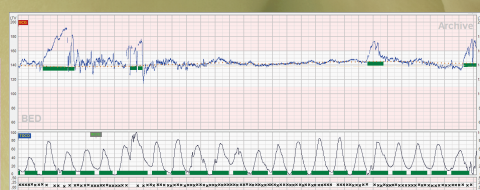
Without Alert



Baseline shift



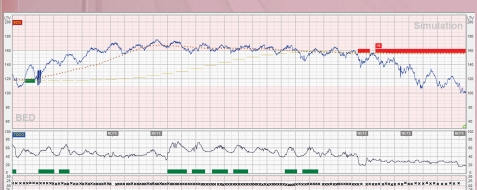
Increased variability (saltatory), Repetitive decelerations



Tachysystole



Repetitive decelerations, MHR monitoring?



Deceleration > 5 min

*Decelerations are repetitive when associated with > 50% contractions.
Absence of accelerations in labour is of uncertain significance.